



250PSI Deluge Valve

ANI VALVE

P/N : AV-DV-xx250

Deluge Valve

DN 40 - DN 80

E/EM

Electrically Actuated Deluge Valve
Auto Reset/Manual Reset

MH/HM

Hydraulically Actuated Deluge Valve
Pilot Controlled
Auto Reset/Manual Reset

P/PM

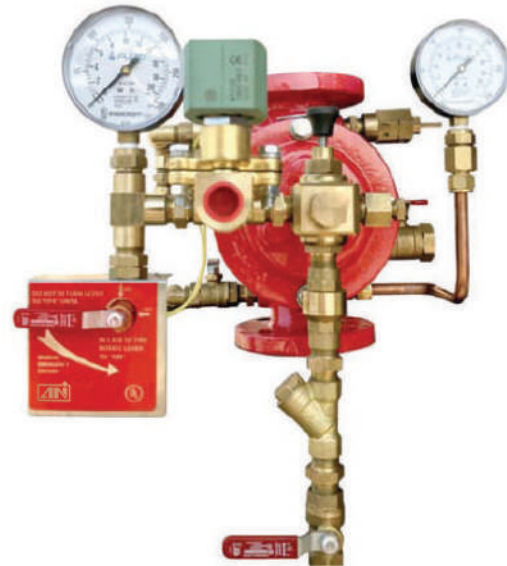
Pneumatically Actuated Deluge Valve
Auto Reset/Manual Reset

PE/PEM

Electrically and Pneumatically Actuated Deluge Valve
Pre-action double interlock System

HR/ER

Flow Regulating Deluge Valve
Constant lower preset, downstream pressure



Technical Features

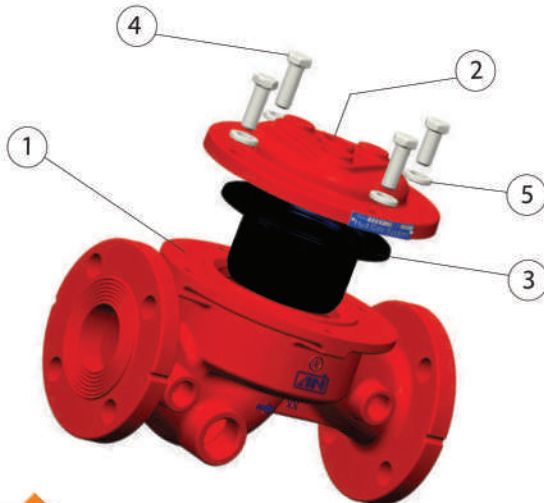
- UL Listed
- No Mechanical Moving Parts with Self supporting diaphragm Simple structure - valve is maintenance free
- Automatic reset - optional manual reset
- Copper trim tubing and brass fittings optional
- Maximum working pressure up to 250 psi (17.25 bar)
- Factory assembled trim package
- Compatible with hydraulic, electric and pneumatic release
- Electrical trim with 2-way Solenoid Valve
- Optional Items: Pressure Switch, Water motor alarm gong
- External manual reset, without opening the valve
- Can be used in vertical or horizontal position

Applications

- Deluge & Dry Pipe Systems
- Foam Systems
- Single or double Interlock Pre-Action
- Fresh Water, Sea water, Foam solution or Foam concentrate
- Offshore platforms and helidecks
- Ni Al Br body deluge valve available for corrosive environments
- Remote controlled valves

Operation

This Model is a quick opening differential diaphragm deluge valve with one moving part. The valve is held closed by the system water pressure in priming chamber, there by rendering the system piping dry. During fire or test conditions, when the releasing system operates pressure is released from the priming chamber allowing the valve to open and to start the flow of water.



Serial No.	Description
1	Body
2	Bonnet
3	Diaphragm
4	Bolts
5	Washers



ANI Group

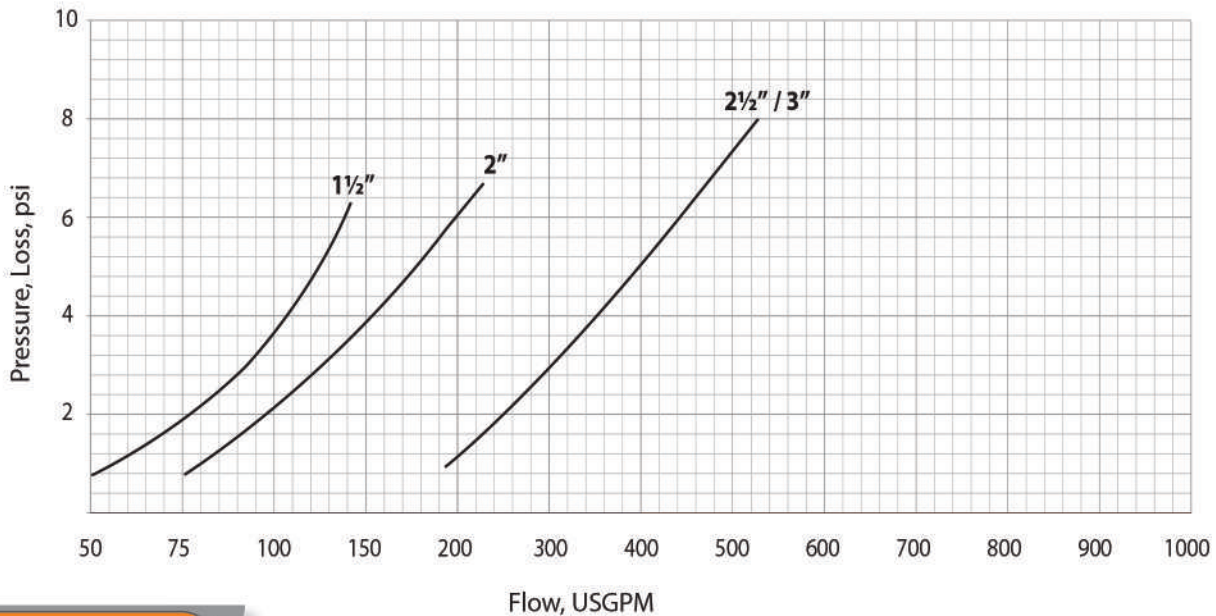


250PSI Deluge Valve

ANI VALVE

P/N : AV-DV-xx250

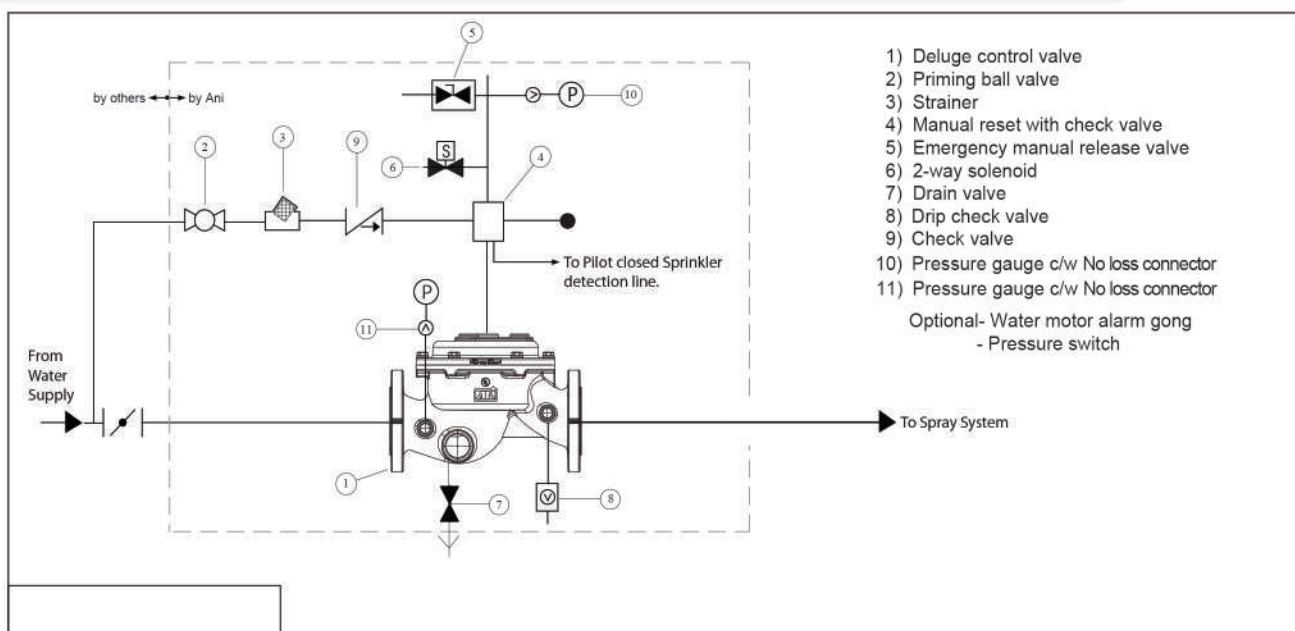
Friction Loss Chart



Specifications

- The Deluge valves are UL Listed, diaphragm sealing globe pattern valve with proven reliable design.
- The valves have an unobstructed flow path with no stem guide or supporting ribs. Valve actuation shall be accomplished by a fully peripherally supported, one-piece flexible diaphragm. The diaphragm assembly shall be the only moving part.
- The valves have a removable cover for quick in-line service, enabling all necessary inspection and servicing.
- The control trim materials shall consist of GI / Copper tubing, brass valves & accessories including 2-way solenoid valve for electrical trim only, strainer and emergency manual release.
- The trim kit shall be supplied loose in box or pre-assembled and hydraulically tested at factory.

Control Scheme-Electrically Operated Deluge Valve (Manual Reset Type)



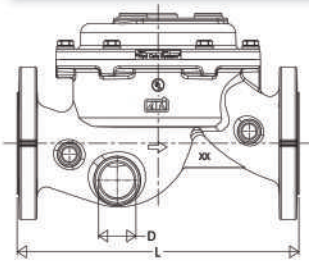


250PSI Deluge Valve

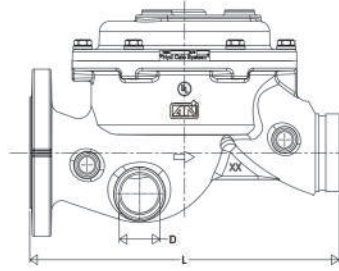
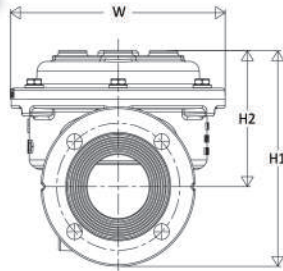
ANI VALVE

P/N : AV-DV-xx250

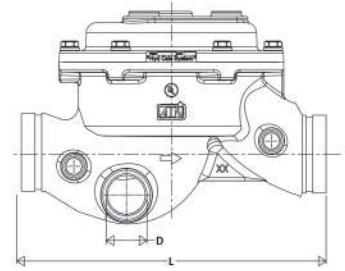
Technical Data



AV-DW-FF250



AV-DW-FG250



AV-DW-GG250

Nominal Size mm / in	Cover Bolt		Drain Thread Size D	Dimensions				Weight (Kgs /Lbs)		
	Size	Qty		L mm/in	H1 mm/in	H2 mm/in	W mm/in	F/F	F/G	G/G
40	M12	3	3/4" NPT	256.0	148.2	88.8	159.3	-	-	6.66
1½	M12	3	3/4" NPT	10.1	5.8	3.5	6.3	-	-	14.68
50	M12	4	1" NPT	287.6	181.3	104.5	193.0	14.40	12.23	10.06
2	M12	4	1" NPT	11.3	7.1	4.1	7.6	31.75	26.96	22.18
65	M12	6	1½" NPT	365.0	258.6	163.0	265.0	32.13	28.30	24.47
2½	M12	6	1½" NPT	14.4	10.2	6.4	10.4	70.83	62.39	53.95
80	M12	6	1½" NPT	365.0	258.6	163.0	265.0	32.13	28.30	24.47
3	M12	6	1½" NPT	14.4	10.2	6.4	10.4	70.83	62.39	53.95

Note: Dimensions for the trim envelope may vary with specific component positioning.

Connections:

- Standard: Flanged, ANSI/ASME B16.42 class 150, Flat Face
- Optional: Grooved, ANSI C606

Water Temperature:

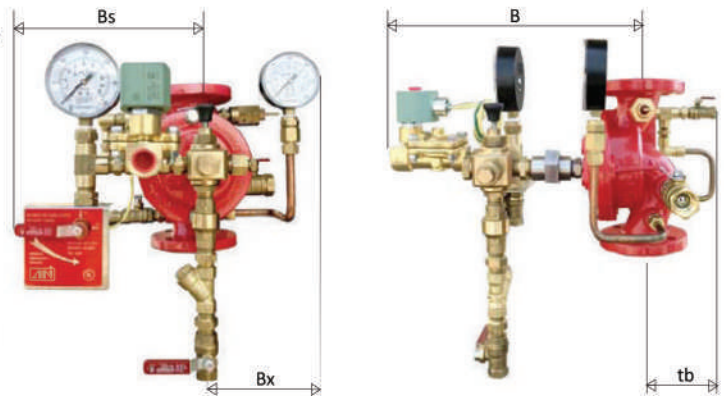
- -5°C to 80°C (180°F)

Available Size:

- 1½", 2", 2½" & 3"
- *2½" is only available in flanged BS4504 PN16

Pressure Rating:

- Up to 250 psi (17.25 bar)



Manufacturers Standard Material

Main valve body and cover:

- Ductile Iron ASTM A536

Control Trim System:

- GI pipe & fittings with brass accessories

Elastomers:

- Neoprene

Coating:

- Epoxy painted to RAL 3001

Optional Material

Main valve body:

- Cast Steel ASTM A216 WCB
- Stainless Steel CF8M
- Ni-Al-Bronze ASTM B148

Control Trim:

- Stainless Steel
- Copper with brass accessories

Nominal Size mm / in	Dimensions			
	B mm/in	tb mm/in	Bs mm/in	Bx mm/in
40	260	200	245	250
1½	10.20	7.87	9.64	9.84
50	275	200	245	250
2	10.80	7.87	9.64	9.84
65	335	200	245	250
2½	13.19	7.87	9.64	9.84
80	335	200	245	250
3	13.19	7.87	9.64	9.84

Note:

The information contained in this document is subject to change without notice due to continuous improvement process. Ani shall not be liable for any errors contained herein.





250PSI Deluge Valve

ANI VALVE

P/N : AV-DV-xx250

Deluge Valve

DN 100 - DN 250

E/EM

Electrically Actuated Deluge Valve
Auto Reset/Manual Reset

H/HM

Hydraulically Actuated Deluge Valve
Pilot Controlled
Auto Reset/Manual Reset

P/PM

Pneumatically Actuated Deluge Valve
Auto Reset/Manual Reset

PE/PEM

Electrically and Pneumatically Actuated Deluge Valve
Pre-action double interlock System

HR/ER

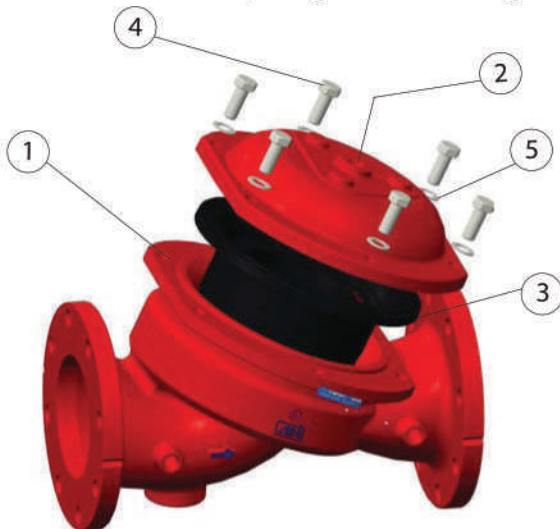
Flow Regulating Deluge Valve
Constant lower preset, downstream pressure

Applications

- Deluge & Dry Pipe Systems
- Foam Systems
- Single or double Interlock Pre-Action
- Fresh Water, Sea water, Foam solution or Foam concentrate
- Offshore platforms and helidecks
- Ni Al Br body deluge valve available for corrosive environments
- Remote controlled valves

Operation

This Model is a Y-type quick opening differential diaphragm deluge valve. The valve is held closed by the system water pressure in priming chamber, there by rendering the system piping dry. During fire or test conditions, when the releasing system operates pressure is released from the priming chamber allowing the valve to open and to start the flow of water.



Technical Features

- UL Listed
- No Mechanical Moving Parts with Self supporting diaphragm Simple structure - valve is maintenance free
- Automatic reset - optional manual reset
- Copper trim tubing and brass fittings optional
- Maximum working pressure up to 250 psi (17.25 bar)
- Factory assembled trim package
- Compatible with hydraulic, electric and pneumatic release
- Electrical trim with 2-way Solenoid Valve
- Optional Items: Pressure Switch, Water motor alarm gong
- External manual reset, without opening the valve
- Can be used in vertical or horizontal position



Serial No.	Description
1	Body
2	Bonnet
3	Diaphragm
4	Bolts
5	Washers



ANI Group

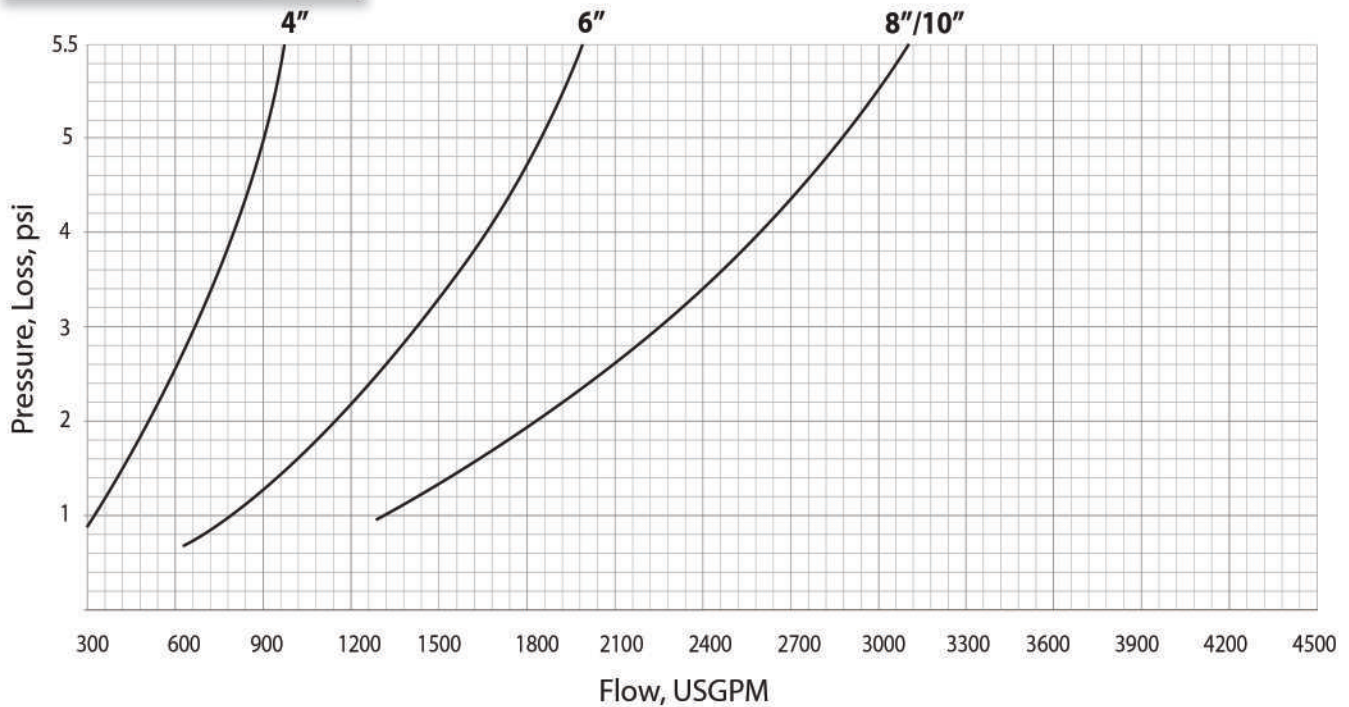


250PSI Deluge Valve

ANI VALVE

P/N : AV-DV-xx250

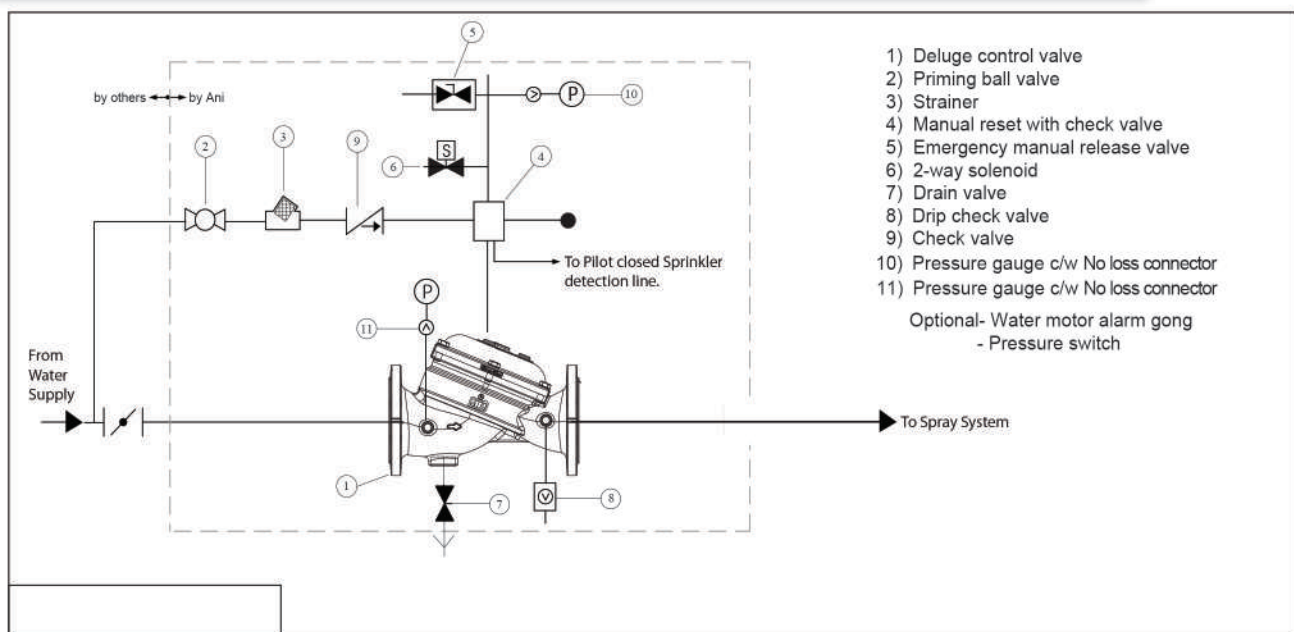
Friction Loss Chart



Specifications

- The Deluge valves are UL Listed, diaphragm sealing Globe Pattern valve with proven reliable design.
- The valves have an unobstructed flow path with no stem guide or supporting ribs. Valve actuation shall be accomplished by a fully peripherally supported, one-piece flexible diaphragm. The diaphragm assembly shall be the only moving part.
- The valves have a removable cover for quick in-line service, enabling all necessary inspection and servicing.
- The control trim materials shall consist of GI / Copper tubing, brass valves & accessories including 2-way solenoid valve for electrical trim only, strainer and emergency manual release.
- The trim kit shall be supplied loose in box or pre-assembled and hydraulically tested at factory.

Control Scheme-Electrically Operated Deluge Valve (Manual Reset Type)



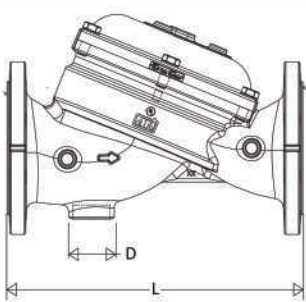


250PSI Deluge Valve

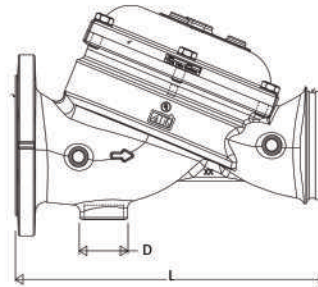
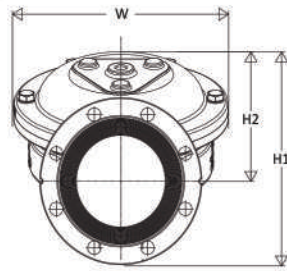
ANI VALVE

P/N : AV-DV-xx250

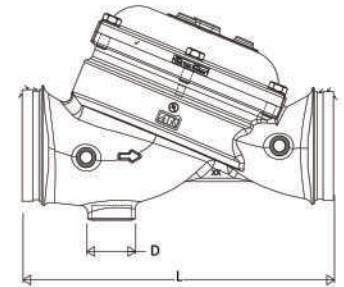
Technical Data



AV-DW-FF250



AV-DW-FG250



AV-DW-GG250

Nominal Size mm / in	Cover Bolt		Drain Thread Size D	Dimensions				Weight (Kgs /Lbs)		
	Size	Qty		L mm/in	H1 mm/in	H2 mm/in	W mm/in	F/F	F/G	G/G
100	M16	6	2" NPT	380.0	301.0	186.0	304.0	40.23	35.27	30.31
4	M16	6	2" NPT	14.96	11.85	7.32	11.97	88.69	77.76	66.82
150	M16	6	2" NPT	490.0	357.5	217.5	369.5	62.50	54.90	47.3
6	M16	6	2" NPT	19.28	14.07	8.56	14.55	137.80	121.05	104.29
200	M20	8	2" NPT	592.0	447.5	275	440.0	106.50	92.67	78.84
8	M20	8	2" NPT	23.31	17.62	10.83	17.32	234.80	204.30	173.81
250	M20	8	2" NPT	580.0	477.5	275.0	440.0	123.30	-	-
10	M20	8	2" NPT	22.83	18.80	10.83	17.32	271.83	-	-

Note: Dimensions for the trim envelope may vary with specific component positioning.

Connections:

- Standard: Flanged, ANSI/ASME B16.42 class 150, Flat Face
- Optional: Grooved, ANSI C606

Water Temperature:

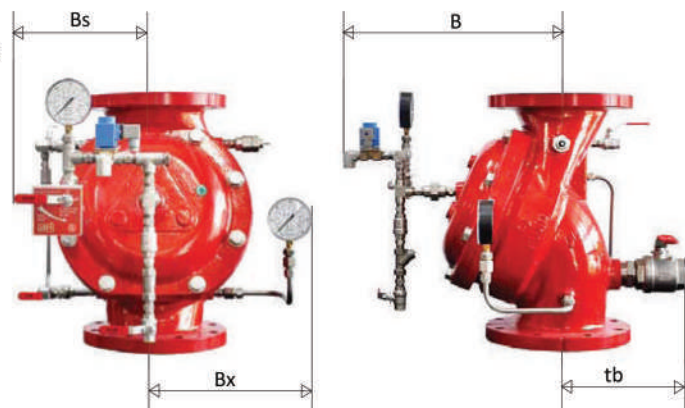
- -5°C to 80°C (180°F)

Available Size:

- 4", 6", 8" & 10"

Pressure Rating:

- Up to 250 psi (17.25 bar)



Manufacturers Standard Material

Main valve body and cover:

- Ductile Iron ASTM A536

Control Trim System:

- GI pipe & fittings with brass accessories

Elastomers:

- Neoprene

Coating:

- Epoxy Painted to RAL 3001

Optional Material

Main valve body:

- Cast Steel ASTM A216 WCB
- Stainless Steel CF8M
- Ni-Al-Bronze ASTM B148

Control Trim:

- Stainless Steel
- Copper with brass accessories

Nominal Size mm / in	Dimensions			
	B mm/in	tb mm/in	Bs mm/in	Bx mm/in
100	360	225	242	240
4	14.17	8.86	9.53	9.45
150	385	195	242	290
6	15.16	7.68	9.53	11.42
200	435	195	242	290
8	17.12	7.68	9.53	11.42
250	435	275	242	290
10	17.12	10.82	9.53	11.42

Note:

The information contained in this document is subject to change without notice due to continuous improvement process. Ani shall not be liable for any errors contained herein.

