



200PSI NRS Grooved End Gate Valve

ANI VALVE

P/N : AV-NG-GG200

Resilient Wedge NRS Gate Valve - Grooved End

Technical Features

Nominal Pressure: 200PSI

Grooved Standard: Metric or ANSI / AWWA C606

Sizes: 2 1/2" , 3" , 4" , 5" , 6" , 8" , 10" , 12"

Face to Face Standard : ASME B 16.10

Working Pressure: 200 PSI (Maximum Testing Pressure 400 PSI)

conforms to UL 262

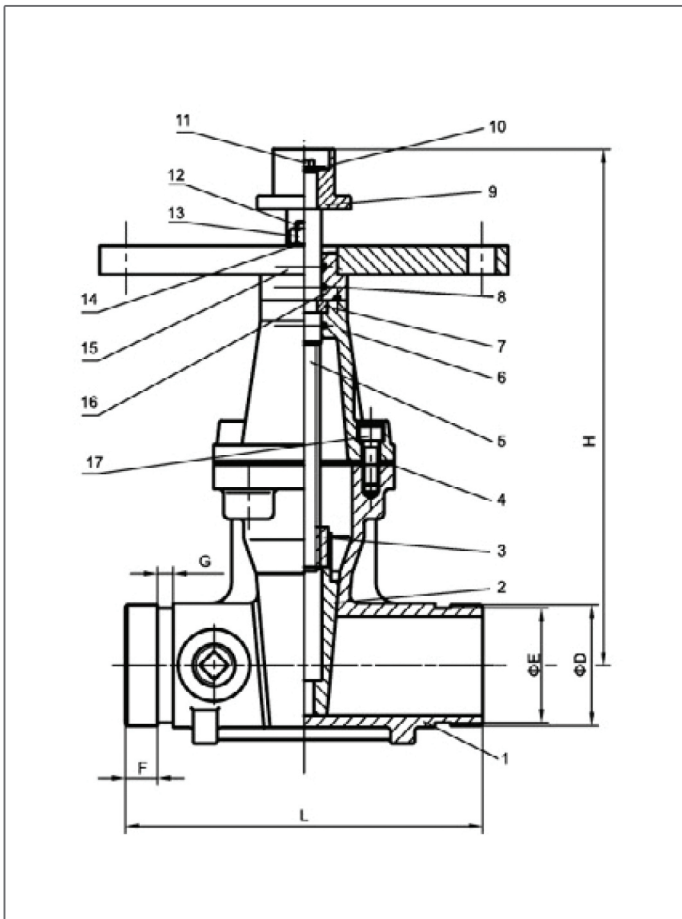
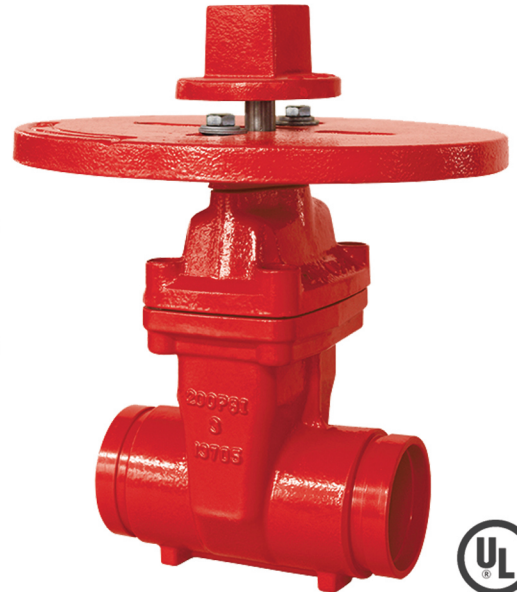
Working Temperature Range: 0C°-80C°(32°F-176°F)

Coating Details: Epoxy coated interior and exterior by Electrostatic Spray or coating upon request

NPT plug on body with 2 operating nuts

Certified lead-free by NSF / ANSI 61 & NSF / ANSI 372 is available

Approval: UL



Valve Material List

NO	Name	Material	Standard
1	Body	Ductile Iron	ASTM A536 Grade 65-45-12
2	Disc	Ductile Iron + EPDM	ASTM A536 Grade 65-45-12 +ASTM D2000
3	Nut	C95400	ASTM B148
4	Gasket	EPDM	ASTM D2000
5	Stem	Stainless Steel 304	ASTM A276
6	Cap	Ductile Iron	ASTM A536 65-45-12
7	Retainer Ring	C95400	ASTM B148
8	O-ring	EPDM	ASTM D2000
9	Wrench Nut	Ductile Iron	ASTM A536 65-45-12
10	Minipad	Steel 1045	ASTM A29
11	Bolt	Steel 1045	ASTM A29
12	Stud	Steel 1045	ASTM A29
13	Nut	Steel 1045	ASTM A29
14	Flat Washer	Steel 1045	ASTM A29
15	Coupling Flange	Ductile Iron	ASTM A536 65-45-12
16	Platen	Ductile Iron	ASTM A536 65-45-12
17	Countersunk Head Bolt	Steel 1045	ASTM A29

Dimensions

Size	L	H	D	E	E	F	G
2"	178	265	60.3	60.3	57.15	15.9	7.9
2 1/2"	190	289	76.1	76.1	72.3	15.9	7.9
3"	203	326	88.9	88.9	84.9	15.9	7.9
4"	220	355	114.3	114.3	110.1	16	9.5
5"	254	410	141.3	141.3	137	15.9	9.5
6"	267	455	168.3	168.3	163.9	15.9	9.5
8"	292	558	219.1	219.1	214.4	19	11.1
10"	330	648	273	273	268.3	19	12.7
12"	356	745	323.9	323.9	318.3	19	12.7



ANI Group