

### Pressure Switch

#### Technical Features

**Design Standard:** UL 753/ULC-S548, FM3132

**Electrical Ratings:** 15 Amps at 125/250VAC

**Working Temperature Range:** -10C°-80C°(22°F-176°F)

**INGRESS PROTECTION:** IP65

**Application:**

The Supervisory Switch is installed in the Wet Alarm Valve, Pre-action Alarm Valve or Deluge Alarm Valve in the fire protection system.

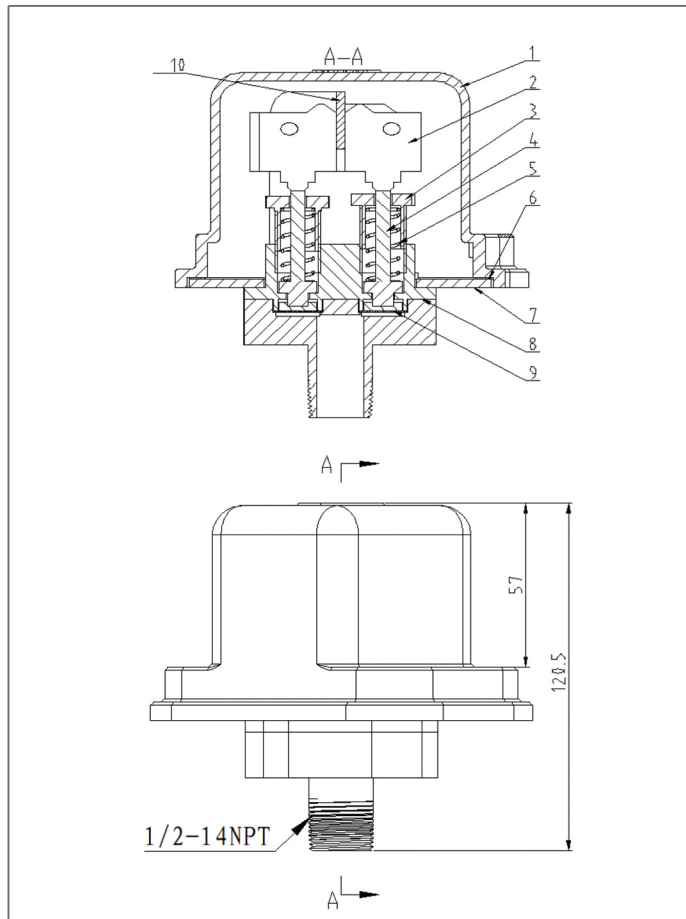
**Dimensions :** 1/2-NPT

(AV-PS-10, pressure range 5-20PSI

AV-PS-40, pressure range 15-55PSI

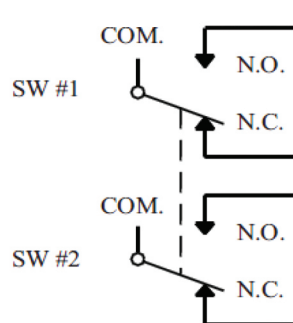
AV-PS-120, pressure range 20-120PSI)

**Approval:** UL

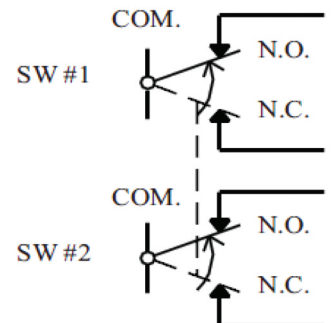


#### Valve Material List

NO	Name	Material
1	Outer Shell	ADC12
2	Micro Switch	
3	Regulating Accessories	PA66+GF30
4	Stem	PA66+GF30
5	Compression Spring	65#
6	Sealing Washer	PA66+GF30
7	Back Shell	ADC12
8	Pressure parts	PA66+GF30
9	Pressure Diaphragm	EPDM
10	Micro Stents	Q235



CLOSED VALVE POSITION



OPEN VALVE POSITION