



Split Casing Centrifugal Fire Pump

FEATURES

- Available in capacities up to 5000 GPM (1135 m³/hr).
- Pressures up to 400 PSI (270m).
- In compliance with NFPA 20 std
- Performance and hydrostatic tests.
- Dynamic balance impellers.
- Space saving design.
- Easy maintenance and upkeep.
- Available in electric or diesel engine driven models.
- Standard construction: cast iron, bronze fitted.
- Clockwise or counterclockwise rotation is available to simplify pump room layout.
- Packed stuff box.
- Grease lubrication.
- Available in 50 or 60 cycle.
- Suction and discharge flanges are on a common centerline.



FIRE Protection

You have decided to reduce the risk of fire damage to your facility by installing a UL listed and/or FM approved fire pump system. Your next decision is which system to purchase.

You want a fire pump that is proven in thousands of installations worldwide.

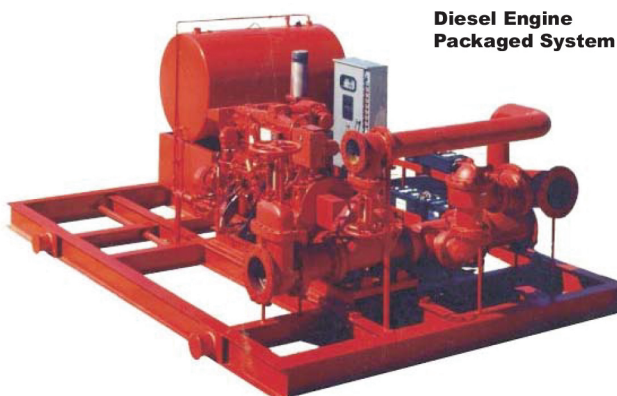
Manufactured by an industry leader with vast experience in the fire protection field. You want complete service, from engineering assistance to field start-up. You want a ANI Pump.

Fire Pump Units & Packaged Systems



Electric Motor Drive and Diesel Engine Drive fire pumps can be furnished for any combination of pumps, drives, controls and accessories for listed and approved and non-listed fire service applications. Packaged units and systems lower fire pump installation costs and offer these advantages:

- Pump, driver, and controller are mounted on a common base.
- Common baseplate unit eliminates the need for separate mounting surfaces.
- Common unit minimizes the need for interconnecting wiring and assembly.
- Equipment arrives in a consolidated shipment, allowing faster and simplified installation and handling.
- Custom designed system, including accessories, fittings, and layouts available to meet the customer's specifications.
- In-house engineering and design expertise to ensure design requirements are realized.

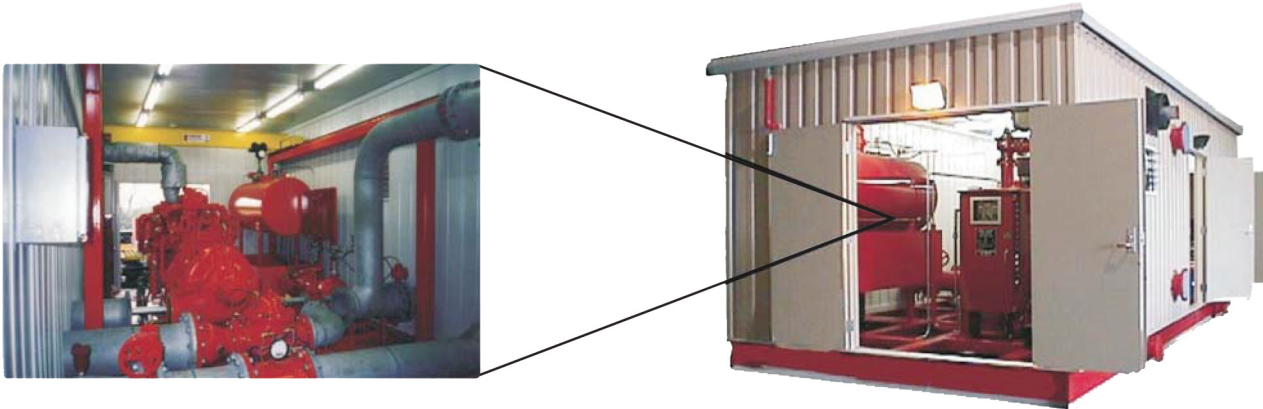




Housed Fire Pump Packaged Systems

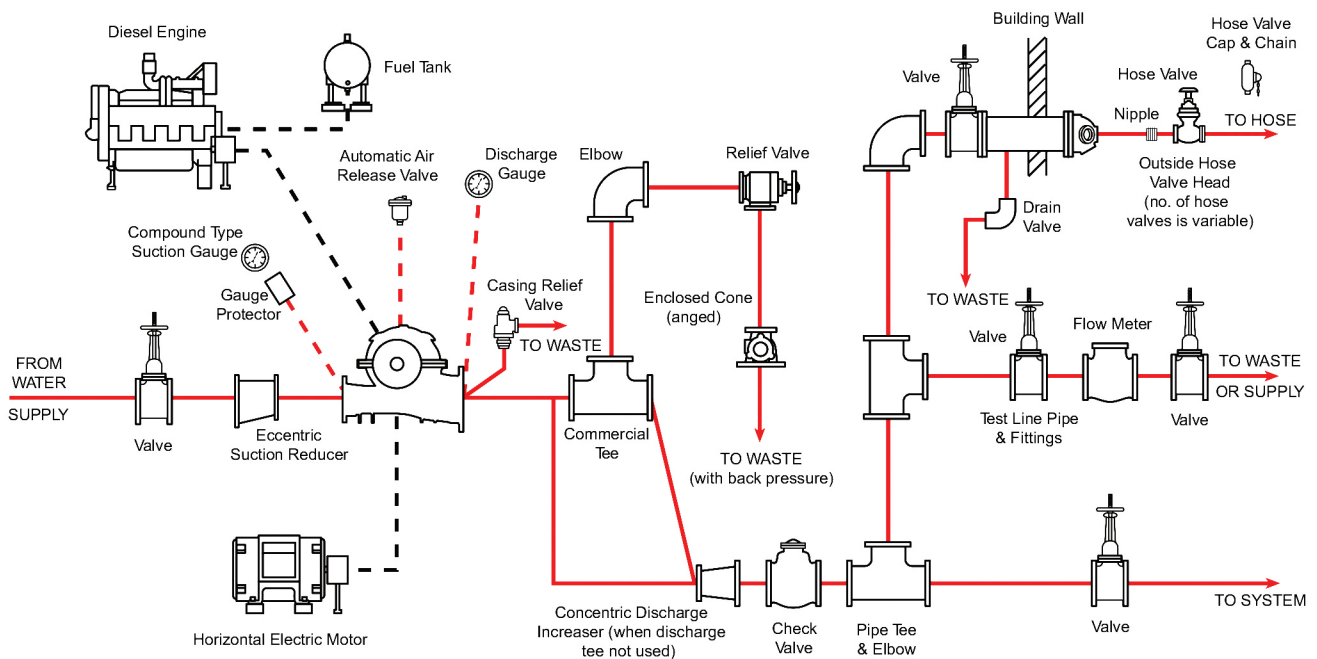
ANI Pump houses are designed and manufactured to high standards of quality in materials, construction, and workmanship. ANI Pump houses are constructed in accordance with the requirements of UL, FM, NFPA13, NFPA20. All housed fire pump packaged systems offer the following advantages:

- Complete unit responsibility
- State of the art engineering designs
- Worldwide technical and commercial support
- Reduced unit installation cost
- Value-added service for customer
- Single source supplier commercial support



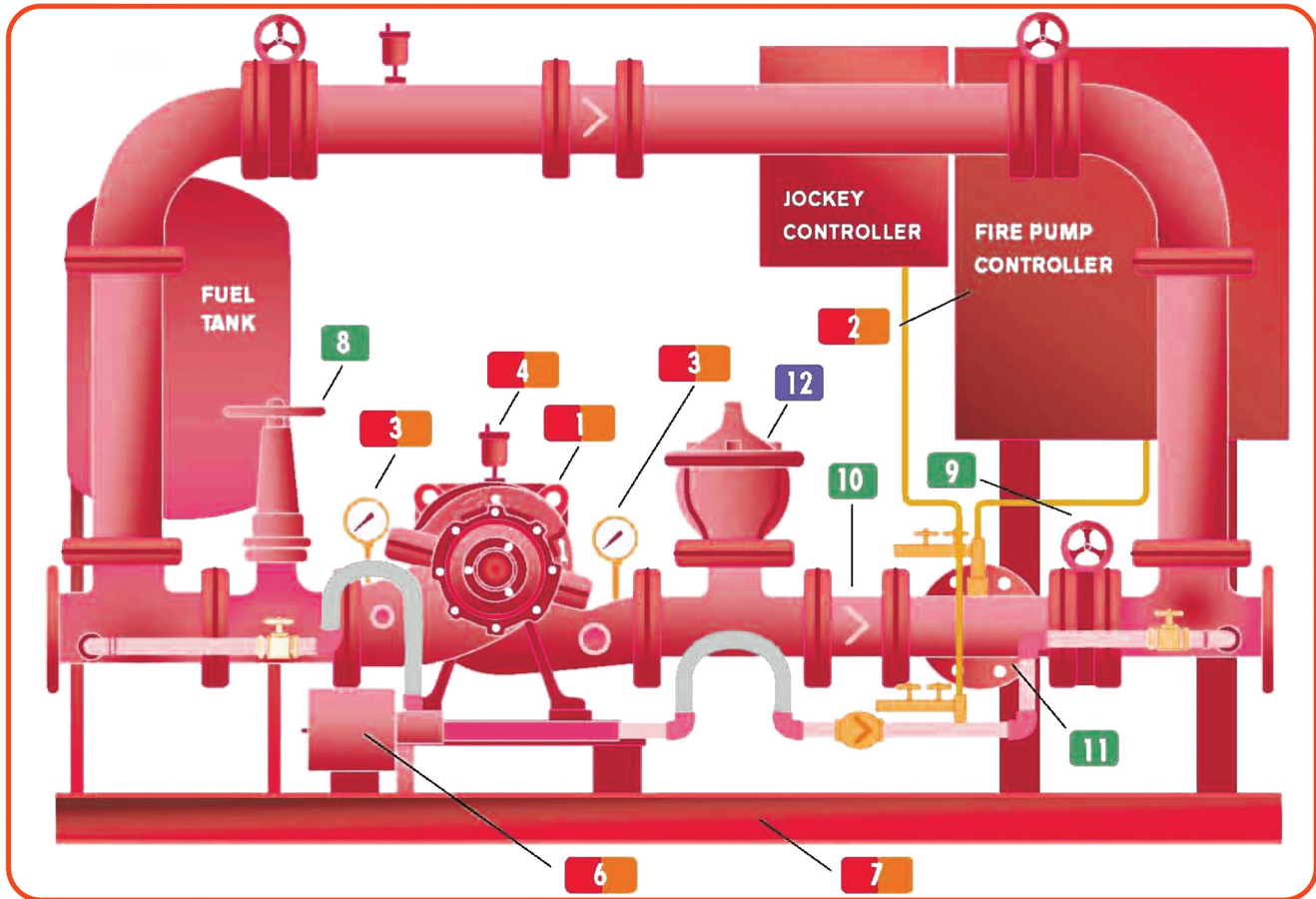
Accessories

Fire Pump Accessories - Split Case Pump





Fire Pump & Packaged Systems



Horizontal Fire Systems

With years of experience in fire protection industry, ANI Pump can supply fire pump systems with all necessary accessories ready for site installation.

GUARANTEED ADVANTAGES

- f Simplifies piping design
- f Single source unit responsibility
- f A complete package that will meet NFPA-20 requirements

FIRE PUMP - ELECTRIC DRIVEN

1. Pump/motor
2. Fire pump controller (with optional transfer switch)
3. Suction and discharge gauges
4. Air release valve
5. Casing relief valve (not shown)
6. Jockey pump
7. Common base

FIRE PUMP - DIESEL ENGINE DRIVEN

1. Pump/engine assembled with
 - f Cooling system
 - f Fuel system
 - f Battery system
 - f Exhaust system
2. Fire pump controller
3. Suction and discharge gauges
4. Air release valve
6. Jockey pump
7. Common base

ACCESSORIES - ADDITIONAL (ELECTRIC OR DIES)

8. Suction OS&Y gate valve
9. Discharge butterfly valve
10. Check valve
11. Test tee

ACCESSORIES - SPECIAL FOR DIESEL OR VFD

12. Main relief valve
13. Enclosed cone (not shown)

- Features common to electric and diesel
- Accessories - (electric or diesel)
- Accessories - special for diesel or VFD

