

Wet Alarm Check Valve - Flanged End

Technical Features

Nominal Pressure: 16bar

Flange Standard: BS EN 1092-2 : 1997

Sizes: 3" , 4" , 6" , 8"

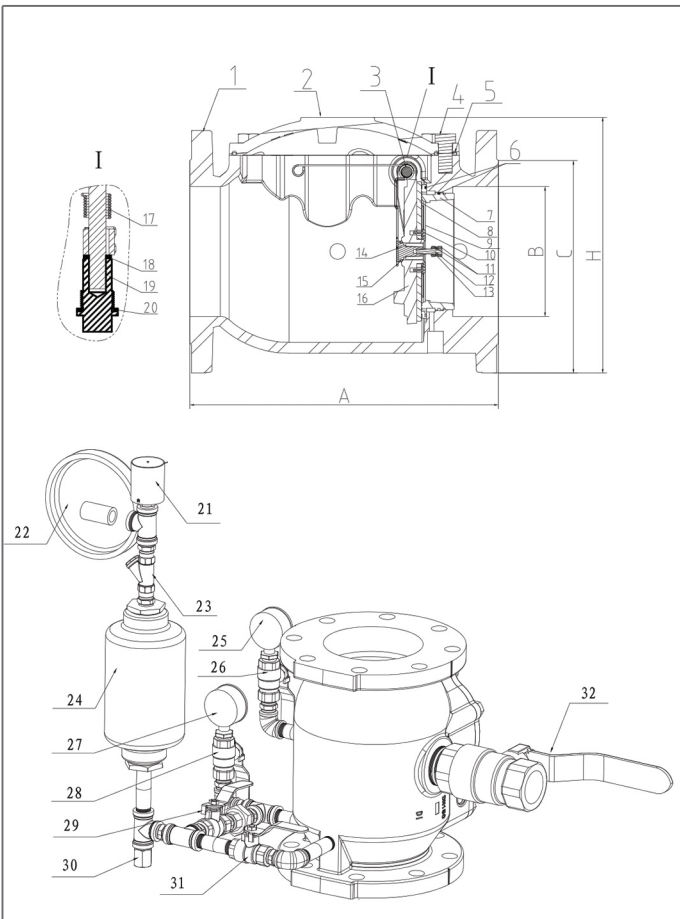
Face to Face Standard : ASME B 16.10

Working Pressure: 16bar

Working Temperature Range: 0C°-80C°(32°F-176°F)

Coating Details: Fusion Bonded Epoxy coated Complies with ANSI/AWWA C550

Approval: UL



Valve Material List

NO	Name	Material
1	Body	ASTM AS 36, 65-45-12
2	Bonnet	ASTM AS 36, 65-45-12
3	Pin	AISI304
4	Hex bolt	arbon steel plated zinc
5	Gasket	EPDM
6	O-Ring	NBR
7	Seat	C89833
8	Gasket	EPDM
9	Gland	AISI304
10	Slotted screw	AISI304
11	Hexagonal nut	AISI304
12	Adjusting screw Hexagonal nut	AISI304
13	Card board	C89833
14	Compensator	C89833
15	O-Ring	NBR
16	Disc	C89833
17	Spring	AISI304
18	Sealing fillet gasket	PTFE
19	Sealing plug	AISI304
20	Sealing fillet gasket	PTFE

External Accessories	
NO	Name
21	Pressure switch
22	Alarm
23	Strainer
24	Decelerator
25	Pressure gauge
26	Ball valve
27	Pressure gauge
28	Ball valve
29	Ball valve
30	Water valve
31	Ball valve
32	Water valve

Dimensions

Size		Dimensions			
in	DN	A	B	C	H
3"	80	241	80	200	235
4"	100	292	100	220	230
6"	150	356	150	285	298
8"	200	495	200	340	352