



16bar Wet Alarm Check Valve

ANI VALVE

P/N : AV-AW-GG200

Wet Alarm Check Valve - Grooved End

Technical Features

Nominal Pressure: 16bar

Grooved Standard: AWW C606,ISO 6182;ISO6182

Sizes: 3" , 4" , 6" , 8"

Face to Face Standard : ASME B 16.10

Working Pressure: 175Psi / 250Psi / 300Psi ; PN16 / PN10

Working Temperature Range: 0C°-80C°(32°F-176°F)

Coating Details: Painting or Fusion Bonded Epoxy coating

Approval: UL

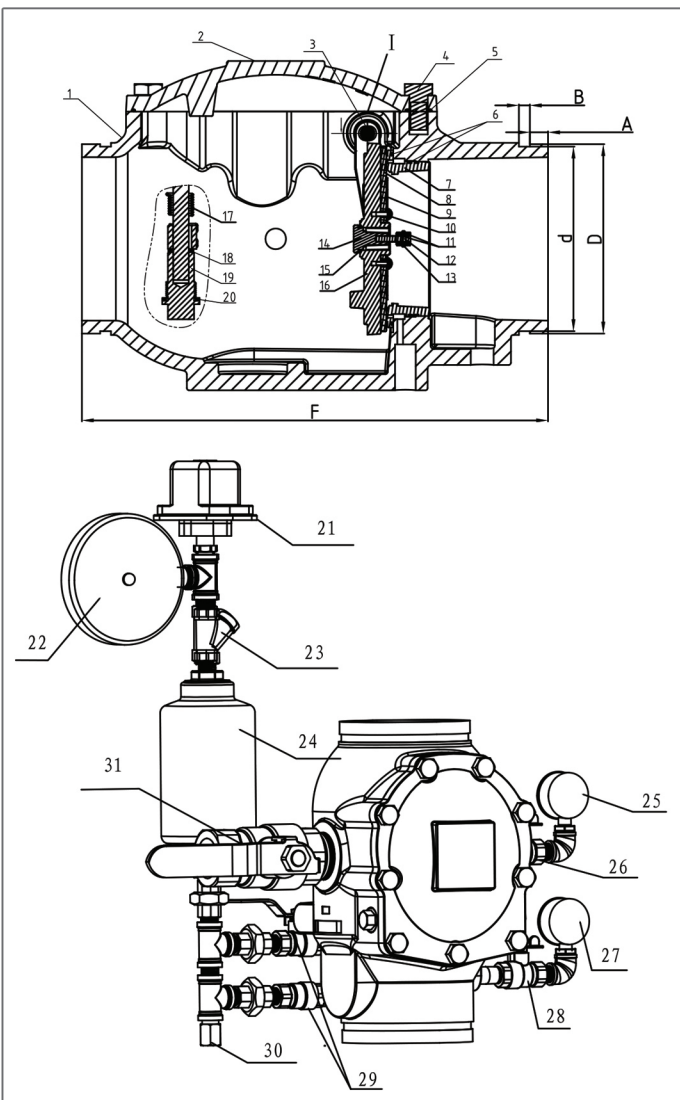


Valve Material List

NO	Name	Material
1	Body	ASTM AS 36, 65-45-12
2	Bonnet	ASTM AS 36, 65-45-12
3	Pin	AISI304
4	Hex bolt	arbon steel plated zinc
5	Gasket	EPDM
6	O-Ring	NBR
7	Seat	C89833
8	Gasket	EPDM
9	Gland	AISI304
10	Slotted screw	AISI304
11	Hexagonal nut	AISI304
12	Adjusting screw Hexagonal nut	AISI304
13	Card board	C89833
14	Compensator	C89833
15	O-Ring	NBR
16	Disc	C89833
17	Spring	AISI304
18	Sealing fillet gasket	PTFE
19	Sealing plug	AISI304
20	Sealing fillet gasket	PTFE
21	Pressure Switch	
22	Alarm	
23	Strainer	
24	Decelerator	ASTM AS 36, 65-45-12
25	Pressure gauge	
26	Ball valve	
27	Pressure gauge	
28	Ball valve	
29	Locking valve	
30	Orifice	C89833
31	Check ballvalve	

Dimensions

Size			Dimensions				
in	DN	OD	A	B	Ød	ØD	F
3"	80	88.9	15.88	7.93	84.94	88.9	320.3
4"	100	114.3	15.88	9.53	110.08	114.3	382
6"	150	159	15.88	9.53	154.5	159	406.4
		165.1	15.88	9.53	160.9	165.1	406.4
		168.3	15.88	9.53	163.96	168.3	406.4
8"	200	219.1	19.5	11.1	214.4	219.1	446



ANI Group